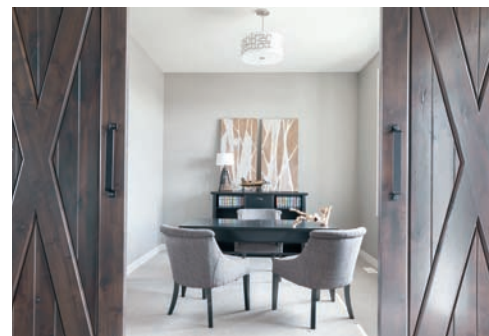




↑ The Inspired model home features 14-foot ceilings in the living room, 10-foot ceilings in the dining and kitchen and generous windows that welcome the outside in, providing an inviting and warm appearance.



↑ Bathed in natural light, the dining space boasts wonderful outdoor views and is positioned near the kitchen with additional island seating.



↑ An office area, or space for formal dining or a library, is located near the entry. Gorgeous knotty alder barn doors lend privacy while adding style.



↑ Quartz countertops, grey subway tile, custom cabinetry with amazing storage detailing, and a modern range hood enhance this highly functional kitchen.

# Crafting Homes and Designing Dreams

*The Inspired home collection by Dietrich Homes is the essence of exquisite design and excellent workmanship.*



Step inside the incredible Inspired kitchen with slate appliances, beautiful poplar cabinetry that stores away every cooking utensil, quartz countertops, a concealed corner pantry, and a generous island with an enclosed wine rack.

BY WANDA PERKINS | PHOTOGRAPHY BY JILL OCKHARDT BLAUFUSS

At the young age of 15, Clay Dietrich began his building career by sweeping floors on construction sites and helping stain and varnish trim work. Working alongside his brother, Brent, he learned the importance of crafting homes with integrity and superior skill. Today, Dietrich Homes, owned by Clay and his son Tom, continues their legacy of excellence to the next generation.

With more than 40 years of construction management, Clay and his staff are proud to offer homeowners a new collection of homes called Inspired by Dietrich Homes. Just in time for 2017's spring Parade of Homes, a spectacular model home will display their continued tradition of distinction and innovation in homebuilding.



↑ Located at 1026 Hickory Lane in West Fargo, the Inspired model home's exterior features Carriage House garage doors, stone accents, seamless steel siding and a winding walkway leading to a welcoming porch.





↑ Effortlessly open, the living room, dining area, kitchen and entryway showcases warm rustic wood flooring, attention to design details and a conveniently located stairway to upper and lower levels.

Not everyone wishing to build a new home desires massive square footage to go along with the equally large budget required to build one. However, homeowners requiring a more moderately sized home still demand the same quality construction and features. Inspired homes are designed for homeowners of all ages, combining excellent workmanship within moderate budgets and smaller footprint concepts. Good things definitely do come in smaller packages!

“We wanted to create homes that are the same quality regardless of the space. It’s more right-sizing. What’s right for you?” says Clay, president of Dietrich Homes. “We’ve built everything from 1,200-square-foot homes to 8,000-square-foot homes. This collection fulfills a need within the industry for right-sized homes with excellent craftsmanship. With a great base to work from, we’re able to build a home that complements what a family’s needs are, along with creating a beautiful space for them to enjoy.”

Inspired homes have all the quality as larger floorplans with the same customized service and options for clients, all within a more moderate price range. Additionally, the ability to personalize interior spaces,

without compromising the appearance of the exterior character, also gives homeowners a space that is uniquely theirs. Pricing starts at approximately \$156 per square foot with rambler, two-story and multilevel plans available.

Consistent quality, flow of design elements within each room and attention to every detail describe standard amenities throughout the entire Inspired collection of homes. Some of these amenities include custom cabinetry with quartz and granite countertops throughout, gorgeous ceramic and glass tile work in baths



↑ A child’s bedroom fit for fairy princesses and dragon slayers offers a perfect loft play area or a great place for sleepovers.

↓ Double vanities are connected by cabinetry which complements quartz countertops and overhead pendant lighting. Transom windows spill sunlight inside this well-designed space.





“It’s our job to take the stress out of the building process for our customers. Form and function can work together beautifully, and we try not to lose sight of either concept. We want to create homes that our clients are proud of while delivering their preferences and meeting their needs.”

Clay Dietrich



↑ Downstairs, a bar area features a unique, wall-mounted wine rack with urban flair.



↓ Entertaining is a breeze with the spacious lower-level bar area. It features a beverage refrigerator, granite counters, modern shelving, a viewing and conversation bar and overhead recessed lighting.



↑ The family room showcases an electric fireplace surrounded by custom barn board, large windows and plenty of space to relax and unwind.

and kitchens, gas and electric fireplaces, Andersen 400 series windows, stone or brick accents, high-efficiency furnaces, fully insulated garages complete with a 220-volt outlets (perfect for electric cars), and 5-inch concrete driveways to withstand

harsh northern winters.

“It’s our job to take the stress out of the building process for our customers,” Clay adds. “Form and function can work together beautifully, and we try not to lose sight of either concept. We want to create homes that

our clients are proud of while delivering their preferences and meeting their needs.”

With the Inspired series of homes completed and move-in ready within four to six months, homeowners can experience Dietrich Home’s promise of building on tradition.

Visit [www.inspiredbydietrich.com](http://www.inspiredbydietrich.com) or [www.dietrichhomes.com](http://www.dietrichhomes.com) for more information about building your dream home. ✱

#### CONTRIBUTORS...

Concrete: All Finish; Electrical: JDP Electric; Audio: Media Masters; Plumbing & Heating: Precision; Fireplace: Hebron Brick; Siding: Lemke; Flooring: Carpet World; Stone: Hebron Brick; Cabinetry: Ira's Cabinets; Granite: Spaulding Stone; Closet Systems: JL Shelving; Appliances: Rigel's; Lighting: Valley Lights



↑ Pictured is Clay Dietrich, president of Dietrich Homes.



↑ Pictured is Tom Dietrich, partner, vice president and construction manager at Dietrich Homes, who also grew up working on construction sites. Tom recognizes the long-standing tradition of excellence and is carrying on the legacy for the next generations to come.



↑ Pictured is Heather Sagvold, interior designer at Dietrich Homes for over 14 years.